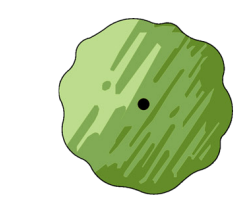
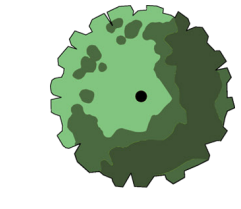
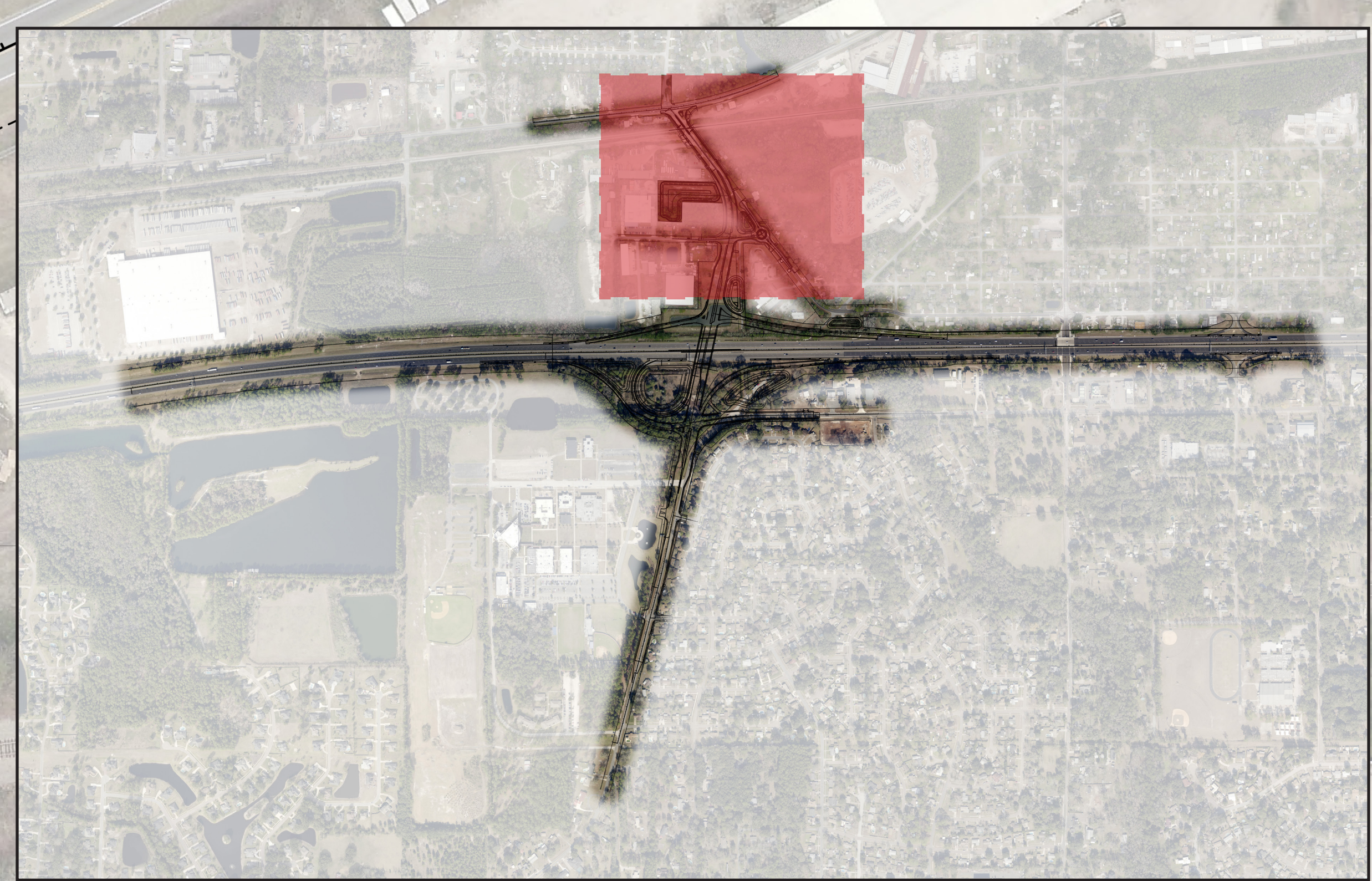


LEGEND

-  *Quercus virginiana* 'Cathedral'
Cathedral Oak
65 & 100 Gallon
-  *Magnolia grandiflora*
'Bracken's Brown Beauty'
Southern Magnolia
100 Gallon
-  *Taxodium distichum*
Bald Cypress
30 & 65 Gallon
-  *Pinus elliottii*
Slash Pine
15 & 30 Gallon
-  *Lagerstroemia indica* 'Muskogee'
Muskogee Crape Myrtle
65 Gallon
-  *Myrica cerifera*
Wax Myrtle
30 Gallon
-  *Arachis glabrata*
Ecoturf Perennial Peanut



Hammond Blvd. North Landscape Improvements

Conceptual Plan Draft



October 2017

**HAMMOND BOULEVARD LANDSCAPE IMPROVEMENTS FROM MALLORY RD TO BEAVER ST
OPINION OF PROBABLE DESIGN AND CONSTRUCTION COSTS**

Date: 11/8/2017

Item		Description	Quan.	Unit	Unit Price	Total price		
TREES								
Botanical Name	Common Name							
Lagestroemia indica 'Muskogee'	Muskogee Crape Myrtle	Min. 3 Trunks @ 10' Ht	6	E	\$ 450	\$ 2,700		
Magnolia grandiflora	Southern Magnolia	3" Dia., 10' Ht	3	E	\$ 725	\$ 2,175		
Myrica cerifera	Wax Myrtle	Min. 4 Trunks @ 6' Ht, 30G	3	E	\$ 225	\$ 675		
Quercus virginiana	Live Oak	4" Dia, 100G,	20	E	\$ 1,100	\$ 22,000		
Taxodium distichum	Bald Cypress	2" Dia, 8' Ht, 30G	5	E	\$ 260	\$ 1,300		
Taxodium distichum	Bald Cypress	3" Dia, 10' Ht, 65G	4	E	\$ 400	\$ 1,600		
Subtotal Trees						\$ 30,450		
TREE UNDERSTORY PLANTS								
Arachis glabrata	Perennial Peanut	Sod	2873	SF	\$ 5	\$ 14,365		
Subtotal Tree Understory Plants						\$ 14,537		
IRRIGATION SYSTEM								
		Low volume application includes water connection, meter, backflow preventer & electric power drop	1	LS		\$ 45,000		
Subtotal Irrigation System						\$ 45,000		
SUBTOTAL PLANT MATERIALS & IRRIGATION							\$ 89,987	
MAINTENANCE OF TRAFFIC (MOT)	Estimated 180 day construction period	5% of Plant Materials & Irrigation Total	1	LS	\$ 4,499	\$ 4,499	\$ 4,499	
MOBILIZATION		7% of Plant Materials & Irrigation Total	1	LS	\$ 6,299	\$ 6,299	\$ 6,299	
MAINTENANCE DURING 1 YEAR ESTABLISHMENT PERIOD			1	LS	\$ 18,000	\$ 18,000	\$ 18,000	
Total Plant Materials, Irrigation, MOT, and Maintenance						\$ 118,786		
CONSTRUCTION CONTINGENCY		10% of Plant material, irrigation, MOT, Mobilization, and Maintenance				\$ 11,879		
TOTAL CONSTRUCTION COST							\$ 130,664	
TOTAL DESIGN FEE							\$ 14,000	
MONITORING AND INSPECTIONS OF CONSTRUCTION/PLANT ESTABLISHMENT								
		24% of Construction Costs	1	LS		\$ 31,359		
TOTAL CONSTRUCTION MONITORING AND INSPECTIONS							\$ 31,359	
TOTAL PROJECT COSTS							\$ 176,023	